



**11 Manor Close, Brampton**

Guide Price **£535,000**





## 11 Manor Close

Brampton, Huntingdon

Council Tax band: F

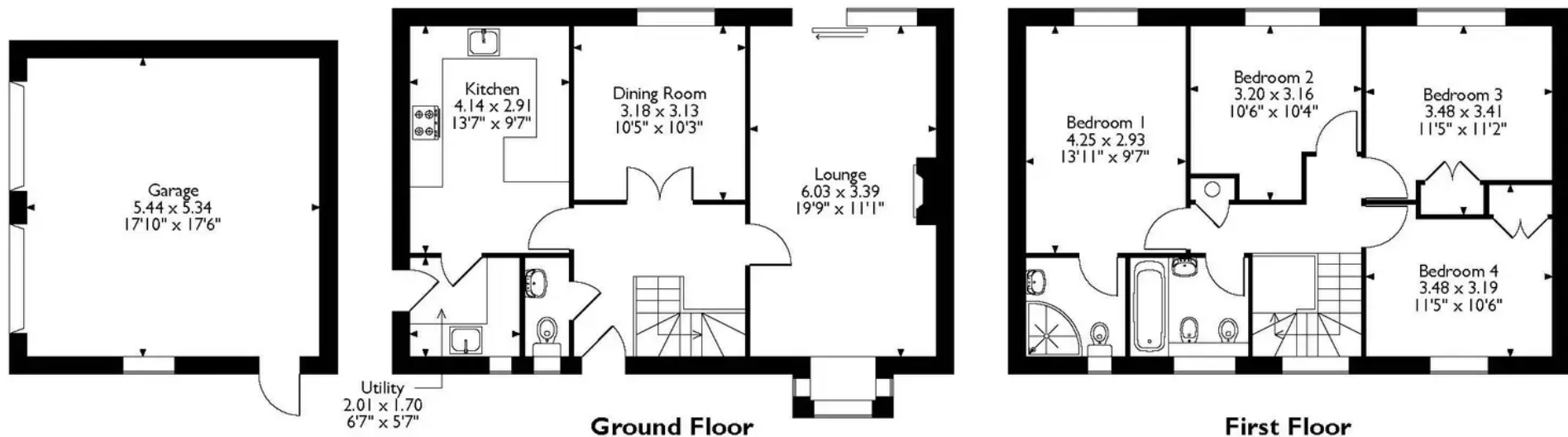
Tenure: Freehold

- Spacious sitting room with patio doors opening to the rear garden, filling the space with natural light.
- Four well-proportioned bedrooms, each with built-in wardrobes for ample storage.
- A recently refitted kitchen/breakfast room, providing a delightful space, and a separate utility room for added convenience.
- Separate dining room, perfect for gatherings and special occasions.
- Principle bedroom featuring a refitted en-suite shower room for your privacy and comfort.
- Additional refitted family bathroom, offering modern amenities for the entire household.
- Well-tended front garden welcomes you home, creating an inviting curb appeal.
- Double garage and a private drive for two cars, providing secure parking and extra storage space.
- Private south/east rear garden with access to the garage.





# 11, Manor Close, Huntingdon, Cambridgeshire



Please note that the location of doors, windows and other items are approximate and this floorplan is to be used for illustrative purposes only. Unauthorized reproduction is prohibited.





## Villager Homes

22a High Street, Brampton - PE28 4TH

01480 436161 • [sales@villagerhomes.co.uk](mailto:sales@villagerhomes.co.uk) • [villagerhomes.co.uk/](http://villagerhomes.co.uk/)