



**15 Gladwin Crescent, Brampton**

Guide Price **£450,000**



## 15 Gladwin Crescent

Brampton, Huntingdon

Council Tax band: E

Tenure: Freehold

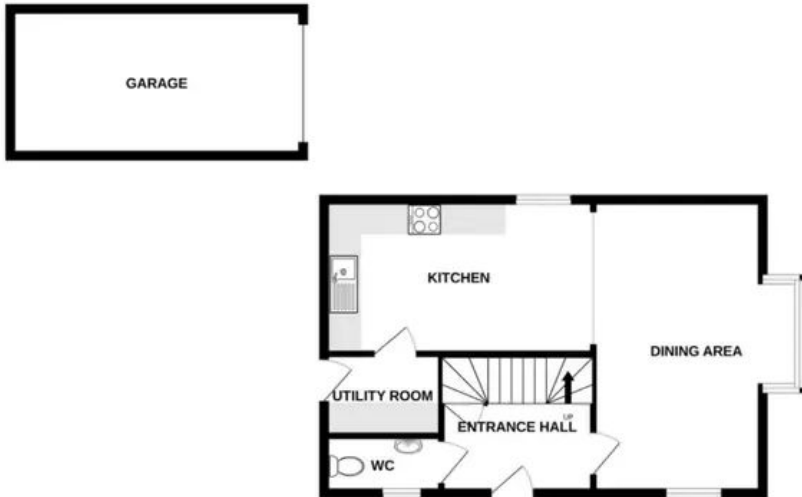
EPC Energy Efficiency Rating: B

EPC Environmental Impact Rating: B

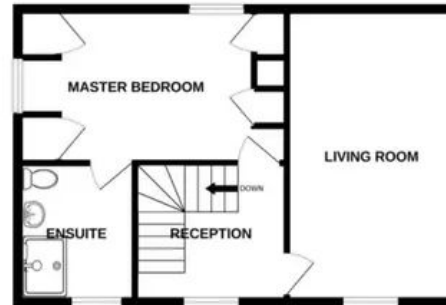
- Exceptional Semi-Detached Home
- Four Bedrooms
- Open Plan Kitchen/Dining Area
- Utility Room & Cloakroom
- En-suite to Master Bedroom
- Garage & Driveway
- Built in 2021 with Warranty
- Excellent Commuter Connections



GROUND FLOOR  
636 sq.ft. (59.1 sq.m.) approx.



1ST FLOOR  
466 sq.ft. (43.3 sq.m.) approx.



2ND FLOOR  
466 sq.ft. (43.3 sq.m.) approx.



TOTAL FLOOR AREA : 1568 sq.ft. (145.7 sq.m.) approx.

Whilst every attempt has been made to ensure the accuracy of the floorplan contained here, measurements of doors, windows, rooms and any other items are approximate and no responsibility is taken for any error, omission or mis-statement. This plan is for illustrative purposes only and should be used as such by any prospective purchaser. The services, systems and appliances shown have not been tested and no guarantee as to their operability or efficiency can be given.



## Villager Homes

22a High Street, Brampton - PE28 4TH

01480 436161 • [sales@villagerhomes.co.uk](mailto:sales@villagerhomes.co.uk) • [villagerhomes.co.uk/](http://villagerhomes.co.uk/)