







## 38 High Street

Brampton, Huntingdon

Council Tax band: B

Tenure: Freehold

- Quintessential Character Cottage
- Original Features Throughout
- Two Bedrooms
- Three Charming Chimneys
- Separate Dining Room
- Spacious Rear Garden
- Sought-After Village Location
- Peaceful yet Well-Connected





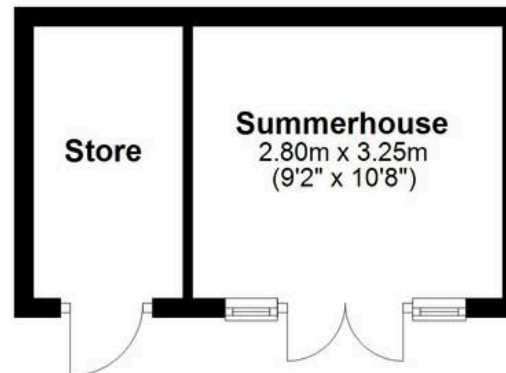
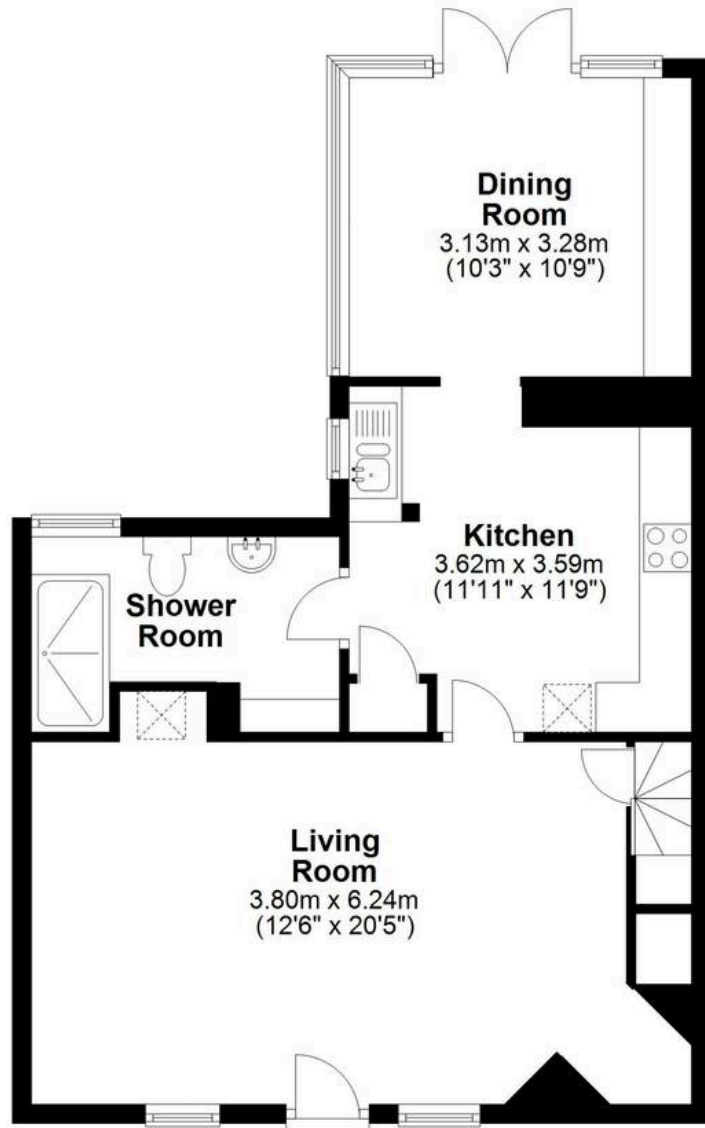






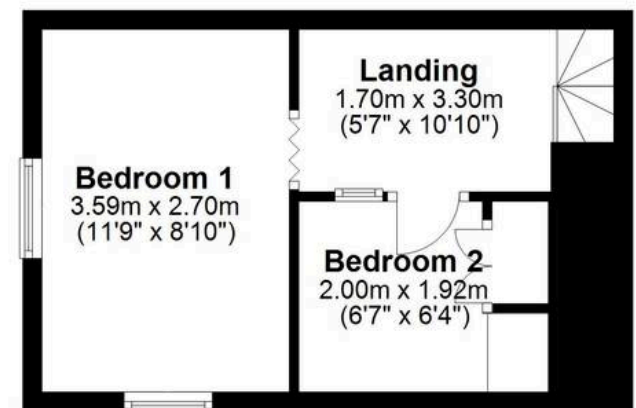
## Ground Floor

Main area: approx. 57.4 sq. metres (618.0 sq. feet)  
Plus outbuildings, approx. 13.9 sq. metres (149.2 sq. feet)



## First Floor

Approx. 22.6 sq. metres (243.3 sq. feet)



Main area: Approx. 80.0 sq. metres (861.3 sq. feet)  
Plus outbuildings, approx. 13.9 sq. metres (149.2 sq. feet)





## Villager Homes

22a High Street, Brampton - PE28 4TH

01480 436161 • [hello@villagerhomes.co.uk](mailto:hello@villagerhomes.co.uk) • [villagerhomes.co.uk/](http://villagerhomes.co.uk/)