





48 Horseshoes Way

Brampton, Huntingdon

Council Tax band: D

Tenure: Freehold

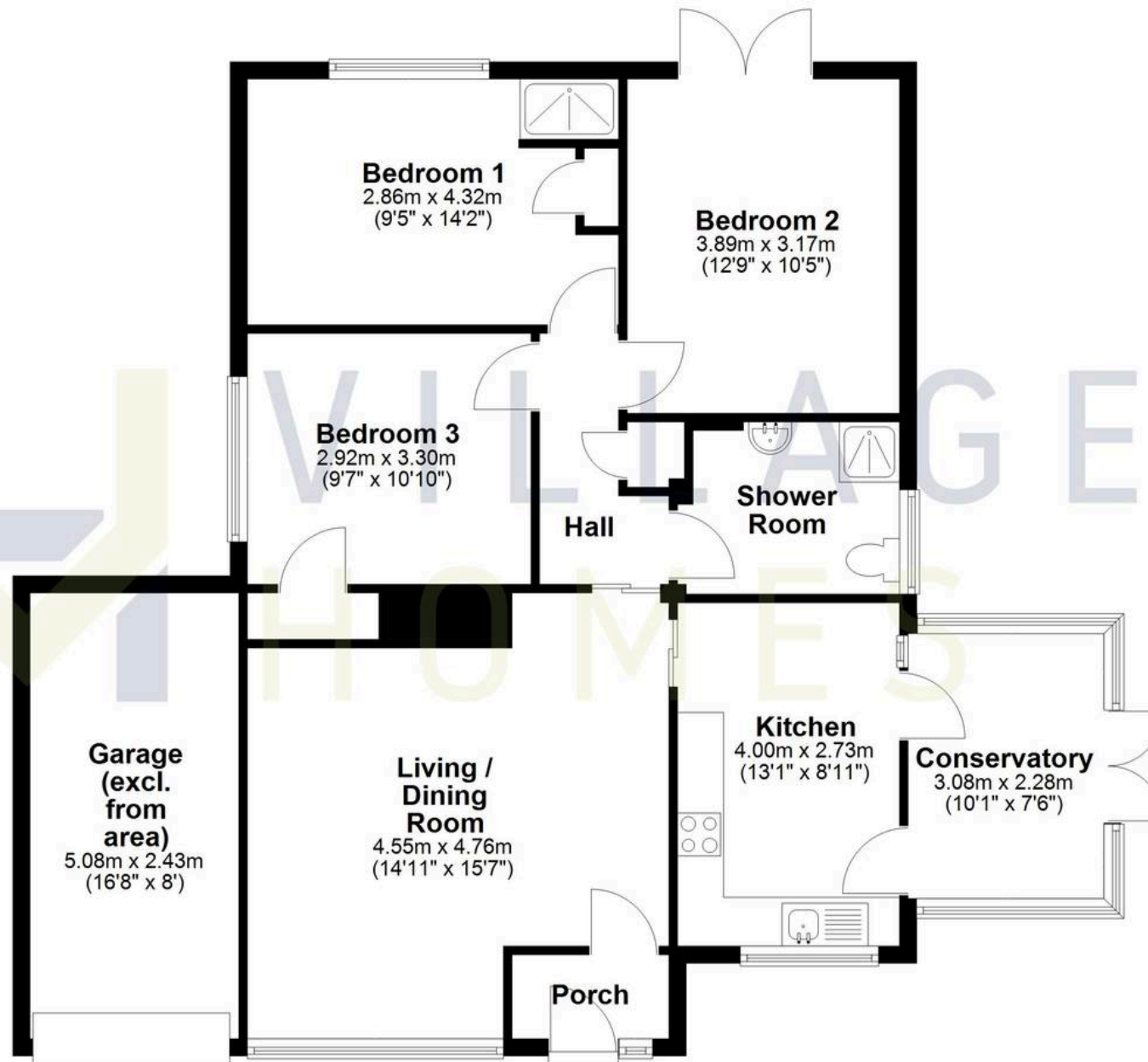
- Spacious three-bedroom detached bungalow
- Prime central village location
- Large corner plot garden
- Chain free sale
- Close to Hinchingsbrooke Hospital & Train Station
- Garage and private driveway
- Superb Links To A1 & A14
- Highly sought-after and popular village location
- Boiler Last Serviced 21/10/25
- Close Walking To Local Amenities





Ground Floor

Approx. 89.3 sq. metres (960.7 sq. feet)



Total area: approx. 89.3 sq. metres (960.7 sq. feet)

Drawings are for guidance only
Plan produced using PlanUp.



Villager Homes

22a High Street, Brampton - PE28 4TH

01480 436161 • hello@villagerhomes.co.uk • villagerhomes.co.uk/