





10 Roundhouse Drive

Perry, Huntingdon

Council Tax band: D

Tenure: Freehold

EPC Energy Efficiency Rating: C

EPC Environmental Impact Rating: C

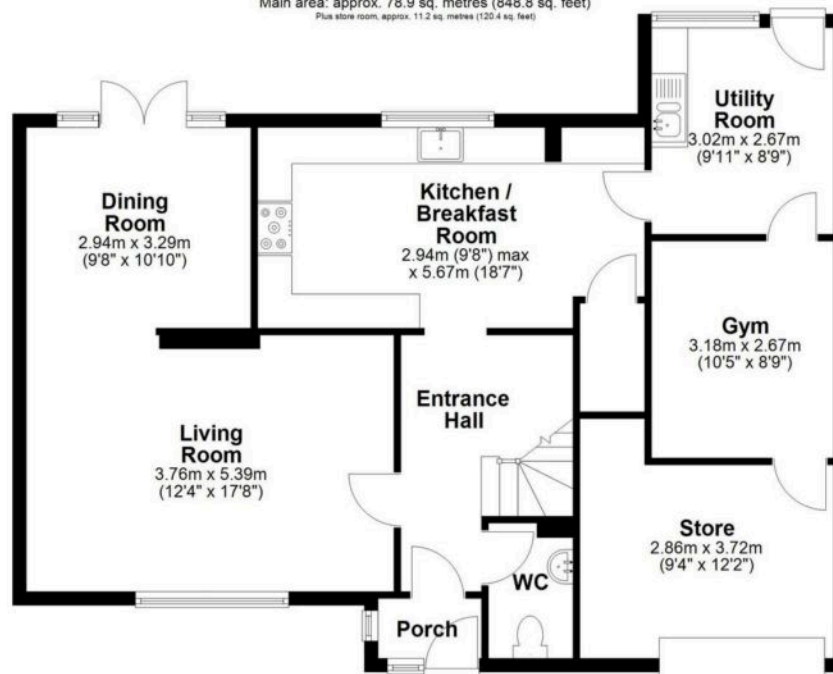
- 4 Bed Detached Family Home
- Rarely Available Sought-After Location
- Stunning Views
- Situated Adjacent to Grafham Water
- Access to A1 & A14 in Under 10 Minutes
- Driveway & Garage
- Private Enclosed Rear Garden
- Gas Central Heating
- UPVC Double Glazing & Gas Central Heating





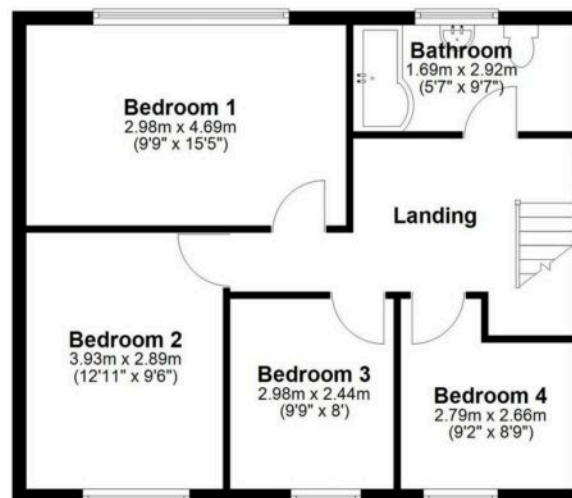
Ground Floor

Main area: approx. 78.9 sq. metres (848.8 sq. feet)
Plus store room, approx. 11.2 sq. metres (120.4 sq. feet)



First Floor

Approx. 56.0 sq. metres (602.9 sq. feet)



Main area: Approx. 134.9 sq. metres (1451.6 sq. feet)
Plus store room, approx. 11.2 sq. metres (120.4 sq. feet)

Drawings are for guidance only
Plan produced using PlanUp.



Villager Homes

22a High Street, Brampton - PE28 4TH

01480 436161 • hello@villagerhomes.co.uk • villagerhomes.co.uk/