





59 Layton Crescent

Brampton, Huntingdon

Council Tax band: D

Tenure: Freehold

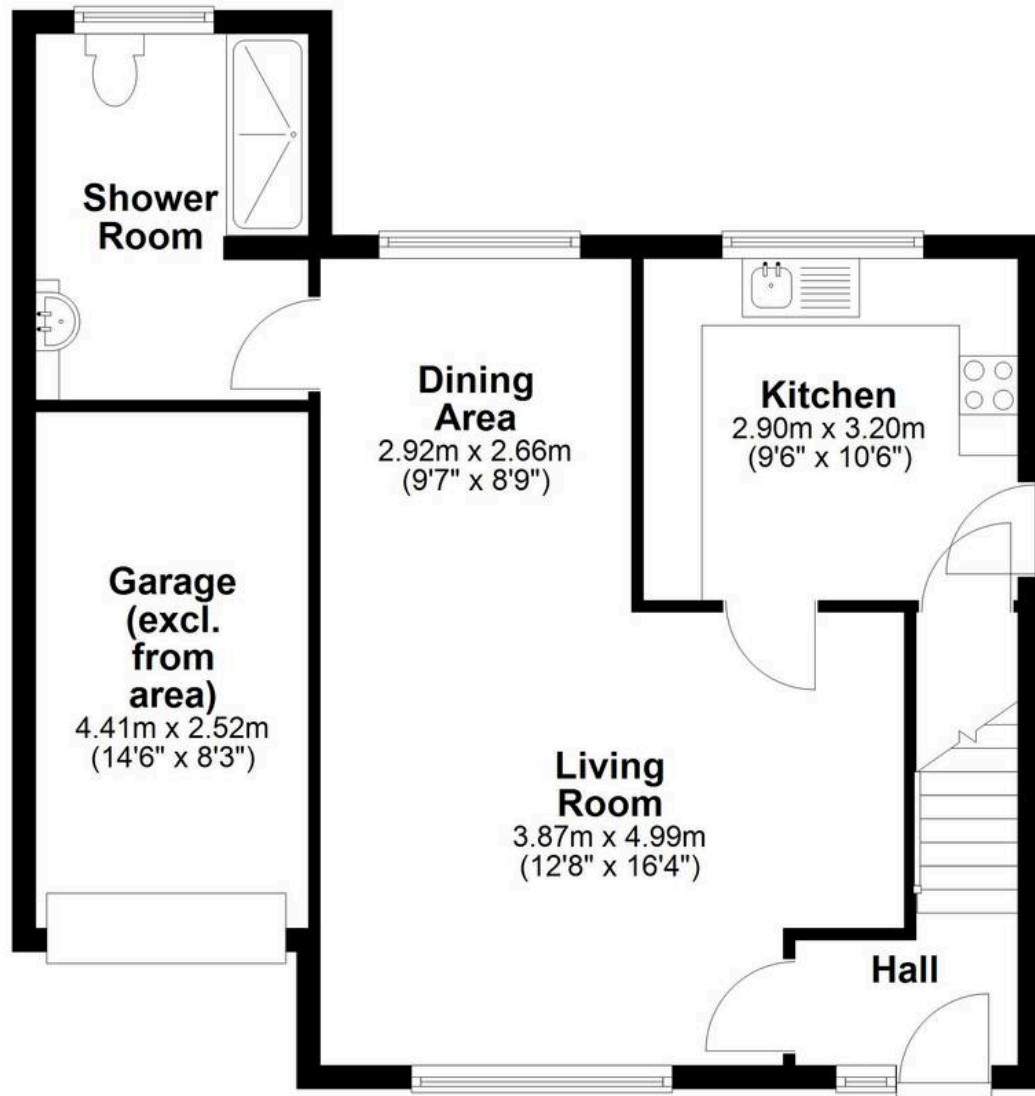
- 3 Bed Link Detached Family Home
- Stunning Rural Views
- Garage
- Private Rear Garden
- Rear Extension with Plenty of Further Extension Potential
- Ground Floor Shower Room & Main Family Bathroom
- Driveway Parking
- Fantastic Links to A1 & A14 in Under 5 Minutes
- Less Than 2 Minute Walk to Brampton Junior School
- Short Walking Distance To All Local Amenities





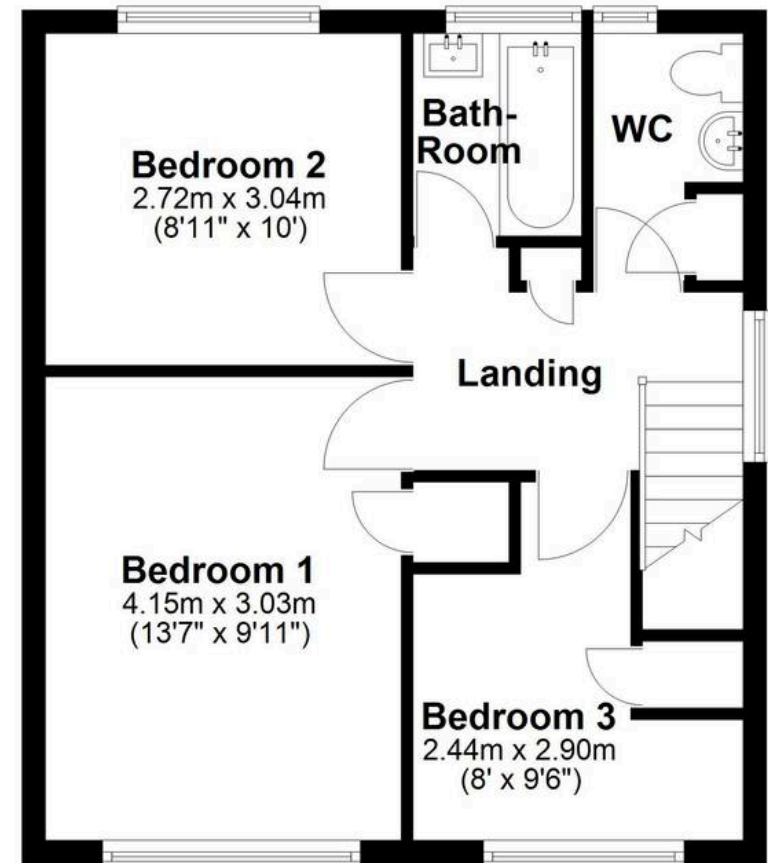
Ground Floor

Approx. 48.4 sq. metres (521.1 sq. feet)



First Floor

Approx. 42.1 sq. metres (452.7 sq. feet)



Total area: approx. 90.5 sq. metres (973.8 sq. feet)

Drawings are for guidance only
Plan produced using PlanUp.



Villager Homes

22a High Street, Brampton - PE28 4TH

01480 436161 • hello@villagerhomes.co.uk • villagerhomes.co.uk/